

WALLPAPER

Lookbook



innovate
INTERIORS

Wallpaper Information

HOW MANY ROLLS DO YOU NEED?

Once you know what media you're after divide the width of your room by the width of the wallpaper roll to calculate the number of rolls you require. Then choose the appropriate length for your ceiling height. Note you will need to round up to the next whole number. NB: Our rolls come with a 25mm pattern overlap.

Still unsure? We're here to help. Just send the height and width measurements of the wall you'd like to beautify to office@innovateinteriors.com.au. We will get back to you ASAP with our estimation.

Roll widths:

Smooth Texture (Peel & Stick) = 550mm

Canvas Texture (Peel & Stick) = 620mm

Silk Paper Texture (Spray & Up) = 540mm

Commercial Grade Smooth (Wet & Up) = 620mm

WALLPAPER MEDIA INFORMATION

Smooth or Canvas Texture - (Peel & Stick)

This removable wallpaper removes clean and can be repositioned and reused as often as you wish. It's also waterproof and washable. Designed to help you reuse, re-purpose and reapply your prints easily yourself.

This wallpaper solves the hassles of traditional wall paper installations with an easy to apply, matte white self adhesive film. Ideal for the non-professional, DIY installer with no experience or tools required. Better yet, when you are done with that graphic it can be removed with minimal fuss and cleaning. Up to 3 year durability on indoor interior walls. Great for partial and full wall graphics.

APPLICATIONS

Home interiors decoration - including rental accommodation | Schools and office interiors | Retail and Point of Sale | Restaurants and Cafes.

Silk Paper Texture - (Spray & Up)

A beautiful textured wallpaper with a unique look. Quick, easy and clean. Eliminates the need for conventional wallcover paste. Simply spray the wall with water, then apply the wide format media directly.

APPLICATIONS

Home Interiors Decoration - including Rental Accommodation | Schools and Office Interiors | Retail and Point Of Sale | Restaurants and Cafes.

Commercial Grade Smooth - (Wet & Up)

This smooth wallpaper is pre-pasted. Simply activate the glue with water and install. There's no need to handle separate glue or adhesives and no glue waste to deal with. You get strong adhesion, yet with this strippable wall paper, removal is easy and clean.

HP PVC-free Wall Paper printed with water-based HP Latex Inks produces odourless prints that meet GREENGUARD criteria for low emitting products. Flame retardant class A approved fire certification. Up to 20 years display permanence indoors, away from direct sun. Mould and mildew resistant. PVC-free alternative with a true, ultra-smooth wall paper finish.

APPLICATIONS

Offices and Retail | Schools and child care centres | Government Departments | Home interiors decoration



CUSTOM DESIGNED AND PRINTED WALLPAPER FOR EVERY SPACE

Innovate Interiors is excited to introduce you to our new DIY Wallpaper Collections. Durable, colourful, creative wall decorations that last with scrub- & scratch-resistant performance.

Transform your space with our custom printed and designed wallpaper – with no messy paste necessary. All our wallpapers are easy to remove, so no need to stress about changing your mind in a few years and wanting to refresh your space. You can choose new wallpaper and do it all again!

Our DIY wallpaper collections come to you ready to transform your walls in handy roll lengths from 2.5m up to 3.1m. Should you require longer rolls for those super tall ceilings, or even a custom design, please get in touch with us and we will happily custom quote for you.

We are always adding to our wallpaper ranges, so check out our website for our latest designs.

www.innovateinteriors.com.au

Cover. *Mandala, Indigo*
 Above Left. *Terrazzo, Cookie Dough*
 Above Right. *Agapanthus, White*



KIDS11



KIDS26

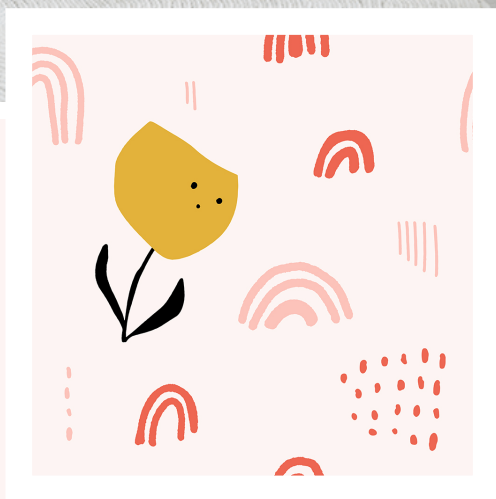


KIDS08



KIDS04

Children



KIDS01

BUTTERCUP LANE

Buttercup Lane



KIDS11

TOUCAN DO IT

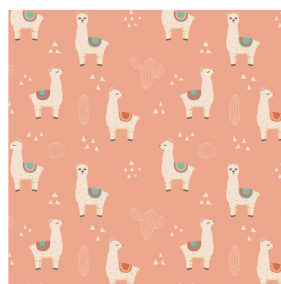
Toucan Do It



KIDS12 Lavender



KIDS13 Cactus Green



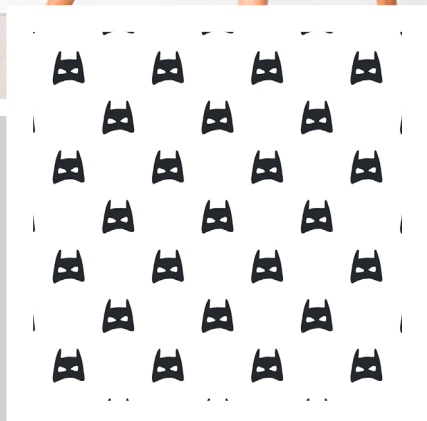
KIDS14 Fiesta



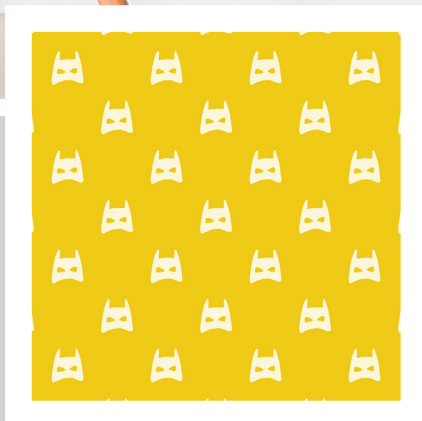
KIDS15 Bluebell

LILO LLAMA

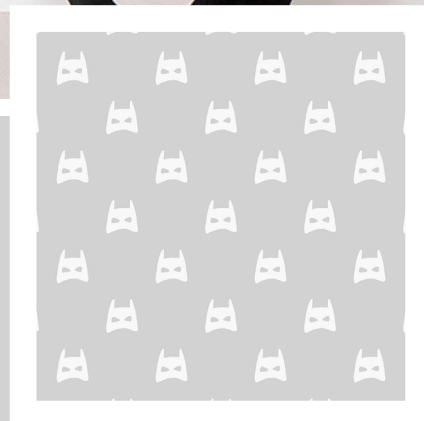
Lavender



KIDS20 Pow



KIDS21 Zap



KIDS22 Wham

SUPERHERO

Pow



KIDS23 Canyon



KIDS24 Whitewashed Musk

CACTUS JACK

Whitewashed Musk



NATURE14



NATURE07



NATURE12



NATURE18

Nature



NATURE01

FLORAL BANKSIA

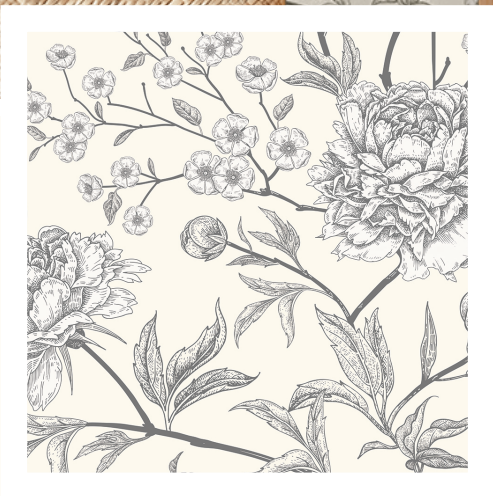
Floral Banksia



NATURE05

SAGE GUM

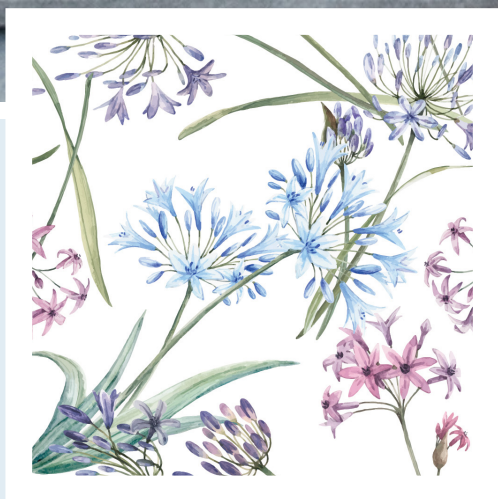
Sage Gum



NATURE10 Cream

VINTAGE BLOOM

Cream



NATURE13

SPRING POSY

Spring Posy



NATURE18 Sage



NATURE19 Blush



NATURE20 Natural

TRAILING GUMLEAF

Natural



PATTERN05



PATTERN04

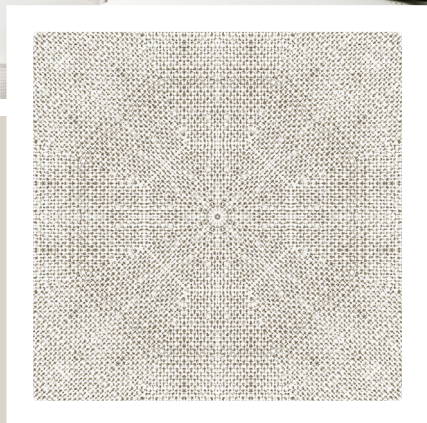


PATTERN08 Smoke



PATTERN11 Jet

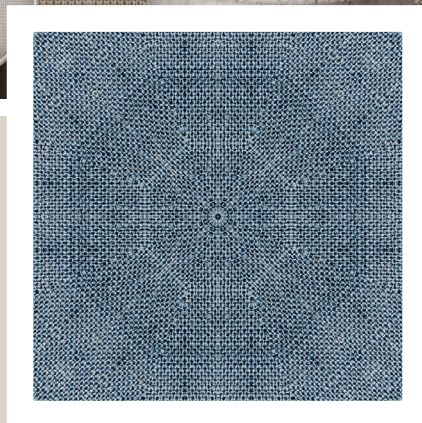
Patterns



PATTERN01 Whitewash



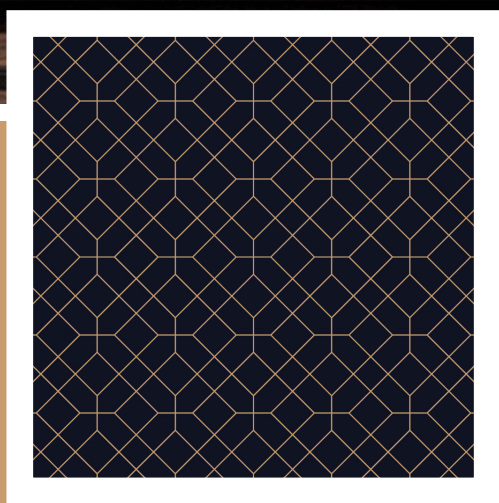
PATTERN02 Hessian



PATTERN03 Indigo

MANDALA

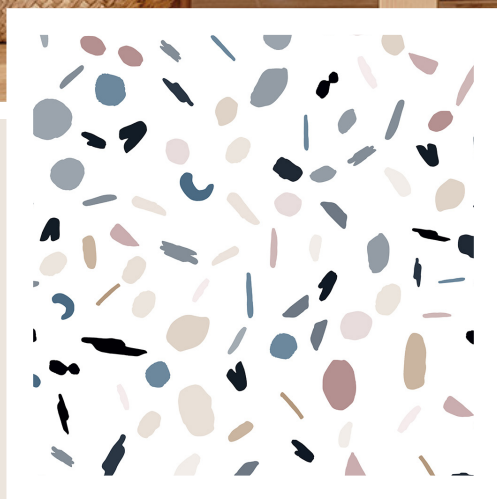
Hessian



PATTERN04

GRAND DECO

Grand Deco



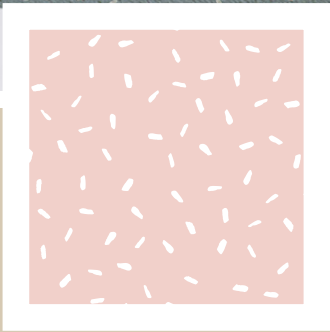
PATTERN05 Nostalgia



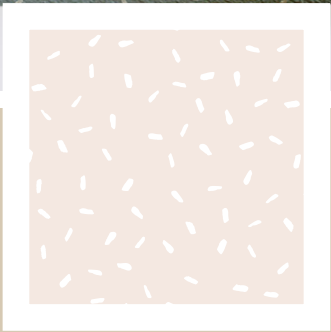
PATTERN06 Cookie Dough

TERRAZZO

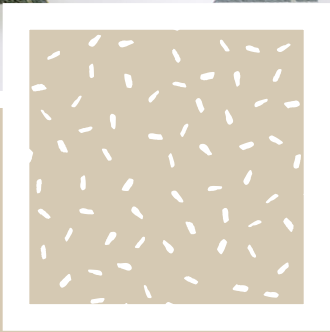
Cookie Dough



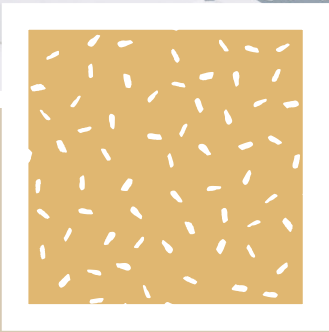
PATTERN08 Coral



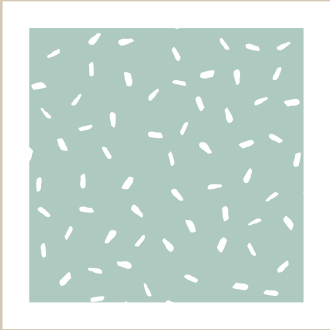
PATTERN08 Blush



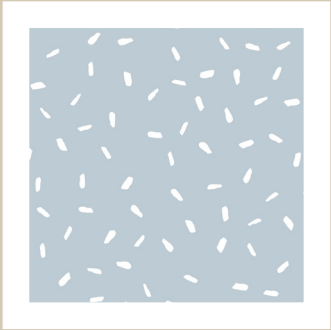
PATTERN08 Clay



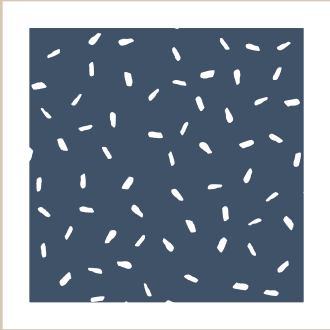
PATTERN08 Butterscotch



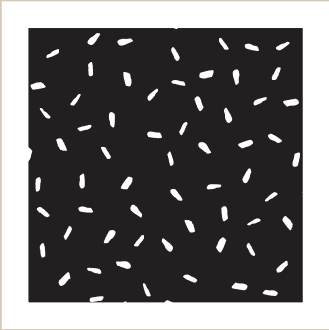
PATTERN08 Sage



PATTERN08 Smoke



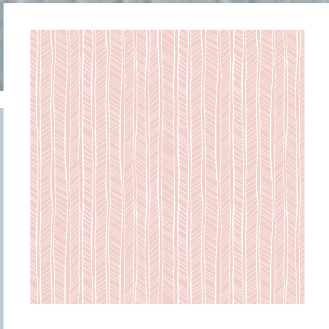
PATTERN08 Ink



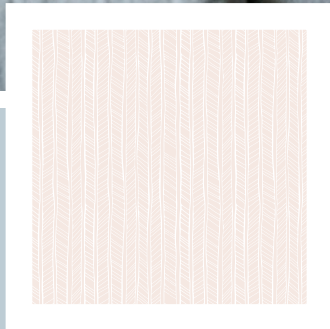
PATTERN08 Jet

INVERTED DASH

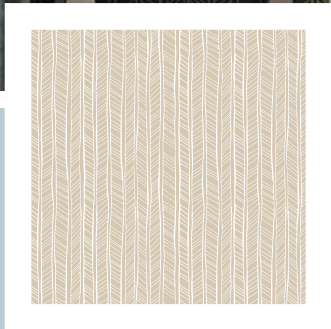
Smoke



PATTERN09 Coral



PATTERN09 Blush



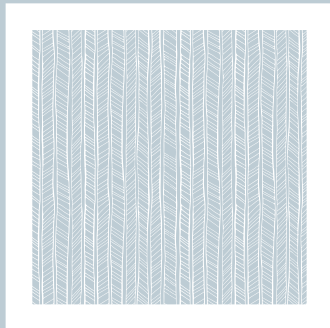
PATTERN09 Clay



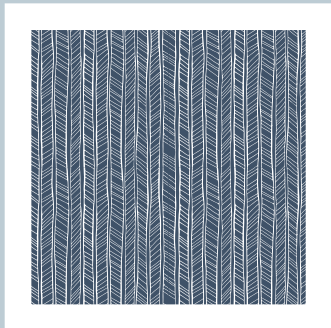
PATTERN09 Butterscotch



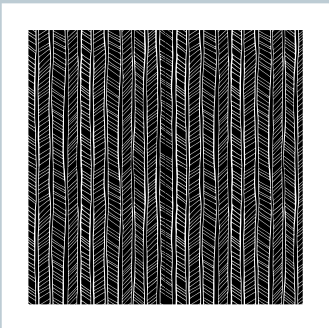
PATTERN09 Sage



PATTERN09 Smoke



PATTERN09 Ink



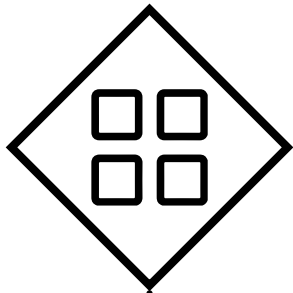
PATTERN09 Jet

ROPE

Ink

EASY D.I.Y. WALLPAPER INSTALLATION

peel & stick

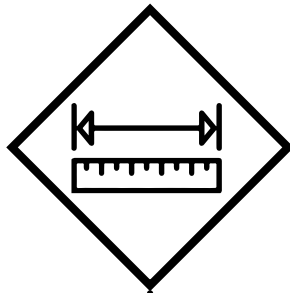


Step 1

Layout

Needed: Masking tape, Stanley knife

1. Find a large space on the ground and lay out all your wallpaper panels in the order you will hang them.
2. Now overlap them by 25mm and line up any patterns or distinguishing features
3. Once you are happy with the alignment, place little strips of masking tape at intervals along the joins
4. Score and slice the masking tape between the joins so you will be able to align these tape marks again once the panels are on the wall.

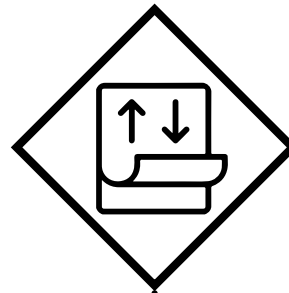


Step 2

Measure

Needed: Tape measure, pencil, ruler or spirit level

- Please note: Prior to hanging your wallpaper on the wall, make sure the wall is clean and dry.
1. Use your spirit level to determine if your roof line is level (this becomes more important the wider your wall is!)
 2. Measure the width of your first wallpaper panel and then draw a faint line down the wall from the edge to the width of your panel, using a ruler or the side of your spirit level.

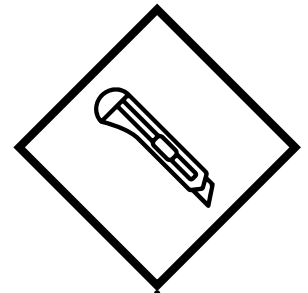


Step 3

Peel & Stick

Needed: Masking tape, Stanley knife

1. Line up the top of your first panel with the top of your wall & also with the faint line you drew on the wall. Approx. 200mm down from the top of the wall TAPE the panel to the wall on both sides to hold it in place.
2. Peel back the top of the release paper to approx. 200mm and cut the paper off carefully making sure the sticky side does not stick to anything.
3. Carefully line up the top of the panel to the top of the wall again, & apply pressure to stick it to the wall.



Step 4

Finalising

Needed: Stanley knife, squeegee

1. Using your squeegee flatten the top of the wallpaper so there are no bubbles and it is attached to the wall securely.
 2. Discard the masking tape holding the panel on the wall.
 3. Gently pull the release paper slowly as you push the wallpaper down the wall with your squeegee, working your way down the wall and to the side edges making sure the wallpaper is flat with no bubbles.
- Please note: Cut away some of the release paper as you go so the wallpaper stays closer to the wall as you apply it.
4. Repeat the process with each panel & use your knife to trim away any excess.



innovate INTERIORS

Commercial Enquiries

0481 147 643

trade@innovateinteriors.com.au

www.innovateinteriors.com.au



Australian Made,
Australian Owned.